

An aerial photograph of a city street, likely Stanyan Street, showing a mix of residential buildings, trees, and a parking lot. The image is partially overlaid with a yellow shape at the top right and an orange shape at the bottom left.

Permanent Affordable Housing

PUBLIC ART PROPOSAL SHARING SESSION

730 STANYAN

CCDC
&
TNDC

Y
OMA
Studio

Community Outreach



Chinatown Community
Development Center
華協中心



tndc
HOMES. HEALTH. VOICE.

tenderloin neighborhood
development corporation

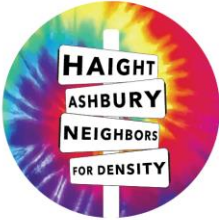


CCC

The Senior
Working Group



PPAC



Concerned Citizens
of Haight



CVIA



Safe Healthy Haight



D5 Supervisor
Office

Agenda



Chinatown Community
Development Center
華協中心



1. Introduction

- CCDC + TNDC

2. Project Status & Timeline

3. Public Art Proposals

- Sorell Raino-Tsui
- Jenifer Wofford

Chinatown
Community
Development
Center

Tenderloin
Neighborhood
Development
Corporation

Mayor's Office of
Housing &
Community
Development



Project Team



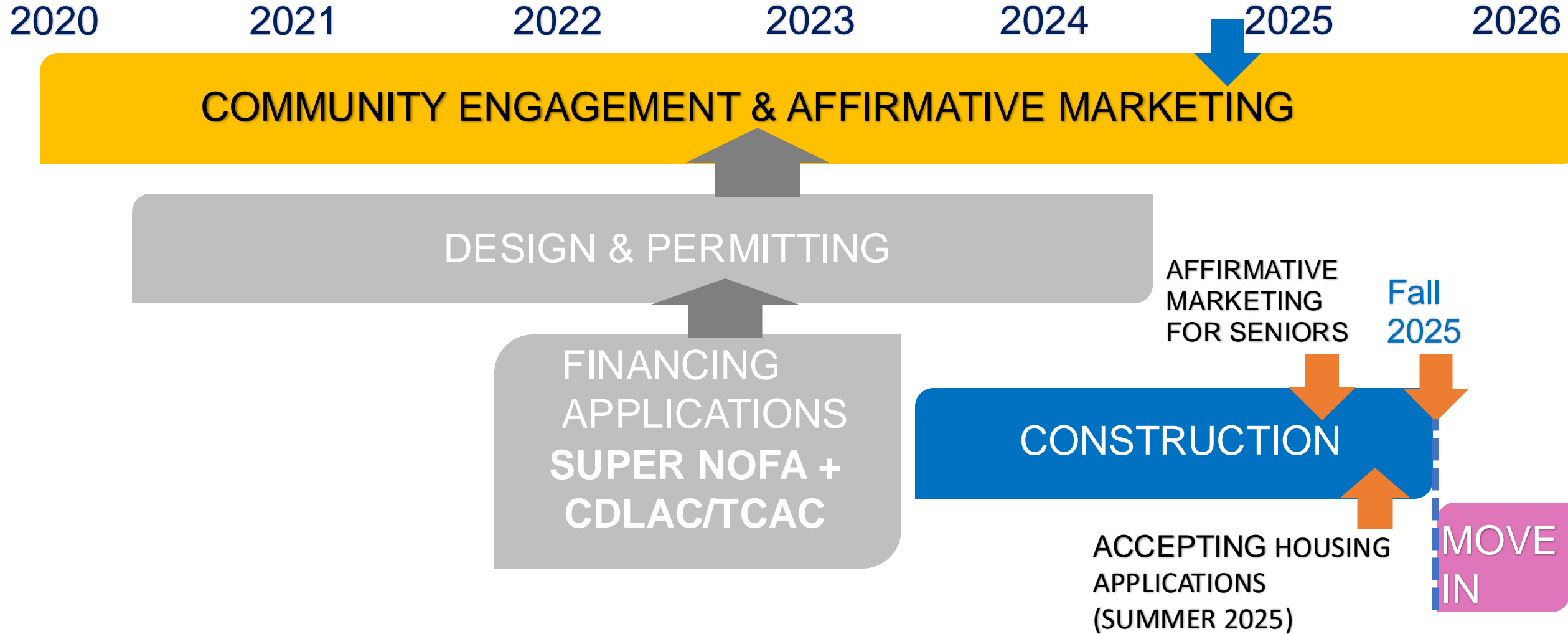
Mayor's Office of
Housing and Community
Development



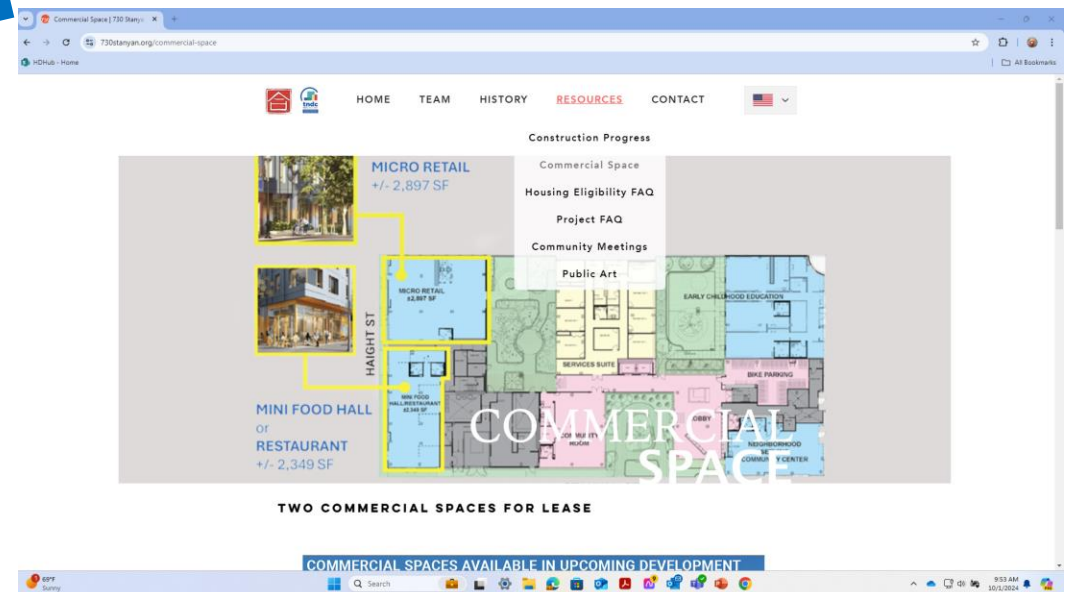
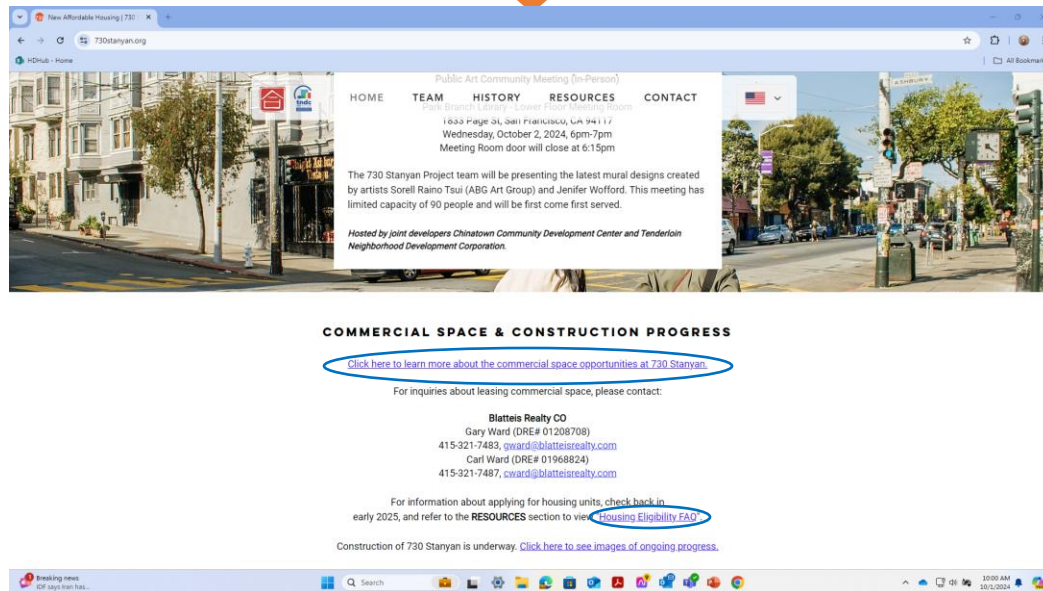
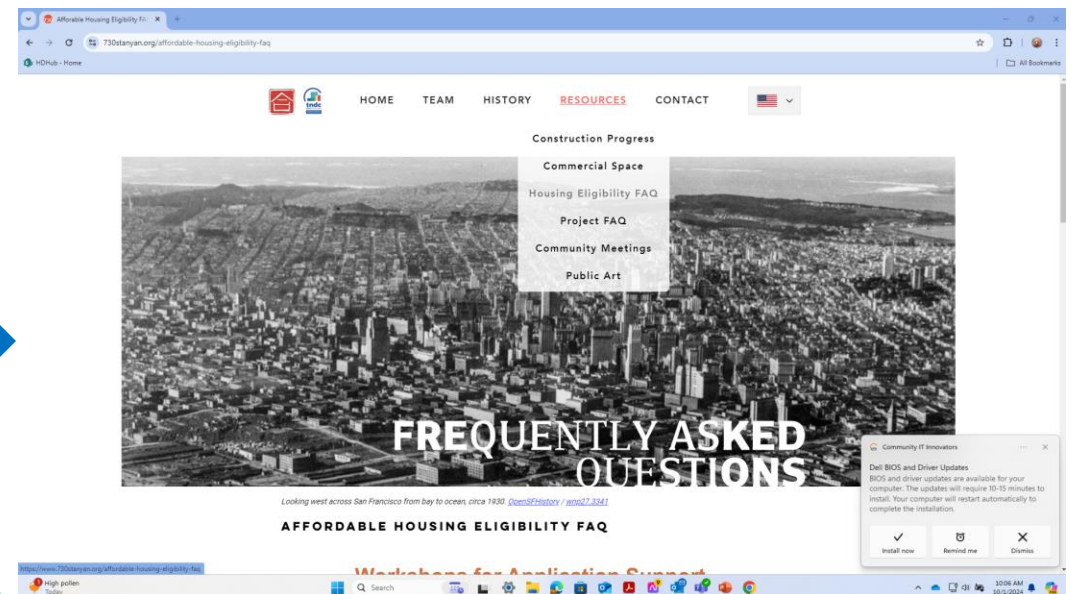
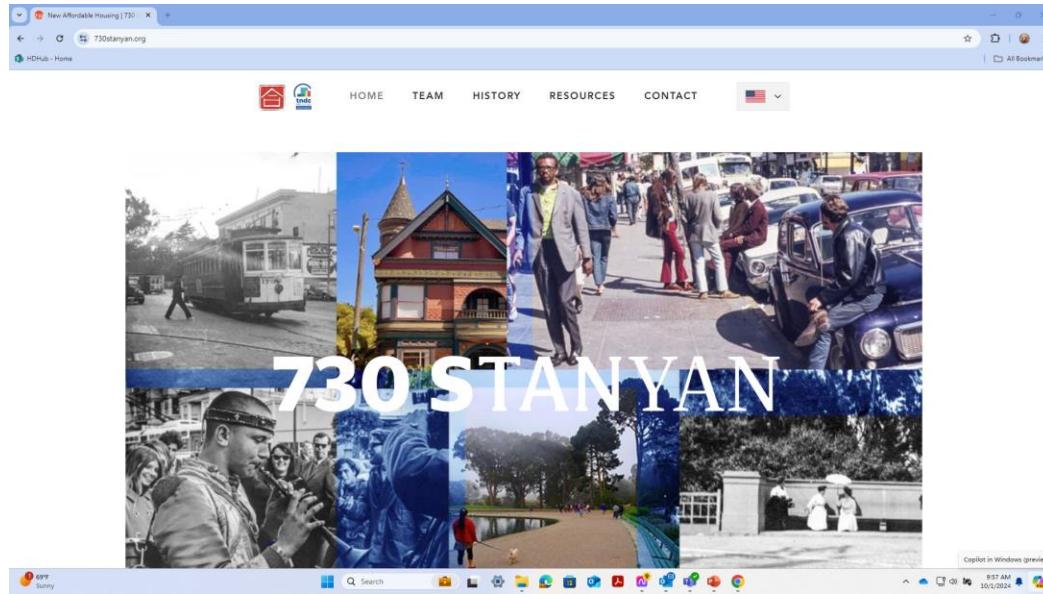
OMA



Project Timeline



Project Website: www.730stanyan.org

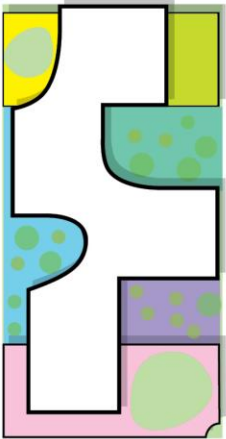


730 STANYAN | Design Goals

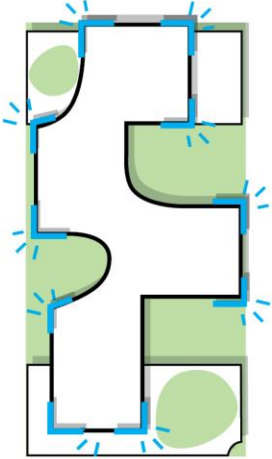
Maximize residential density while addressing the existing neighborhood datum and scale



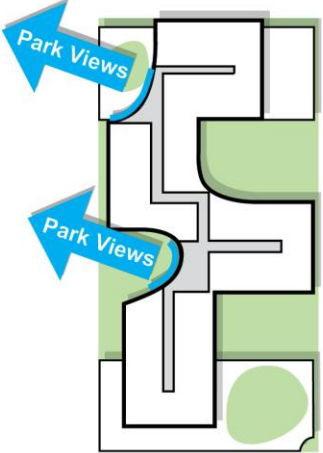
Provide a variety of open spaces for residents and commercial tenants



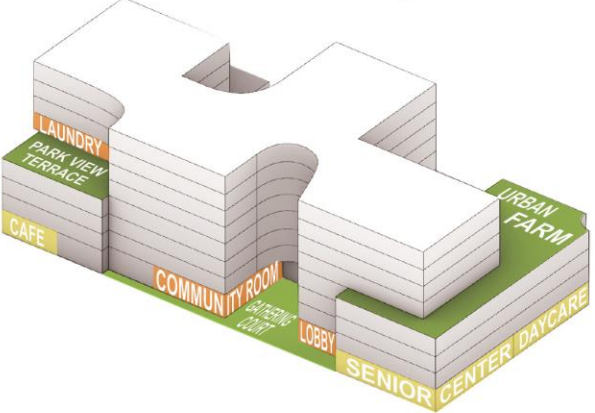
Create corner units to maximize daylight and views in larger family units



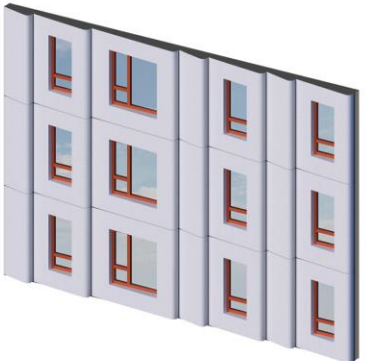
Prioritize access to daylight and views in common areas



Connect common spaces to promote an active and vibrant community



Optimize use of high quality materials by employing prefabrication and unitization





BOWLING

Boeba Music

OVERWOOD
DUSTY BLUE
HERE!

WINTER OF
LOVE

WINTER OF
LOVE

WINTER OF
LOVE

WINTER OF
LOVE

WINTER OF
LOVE

WINTER OF
LOVE

WINTER OF
LOVE

WINTER OF
LOVE

WINTER OF
LOVE











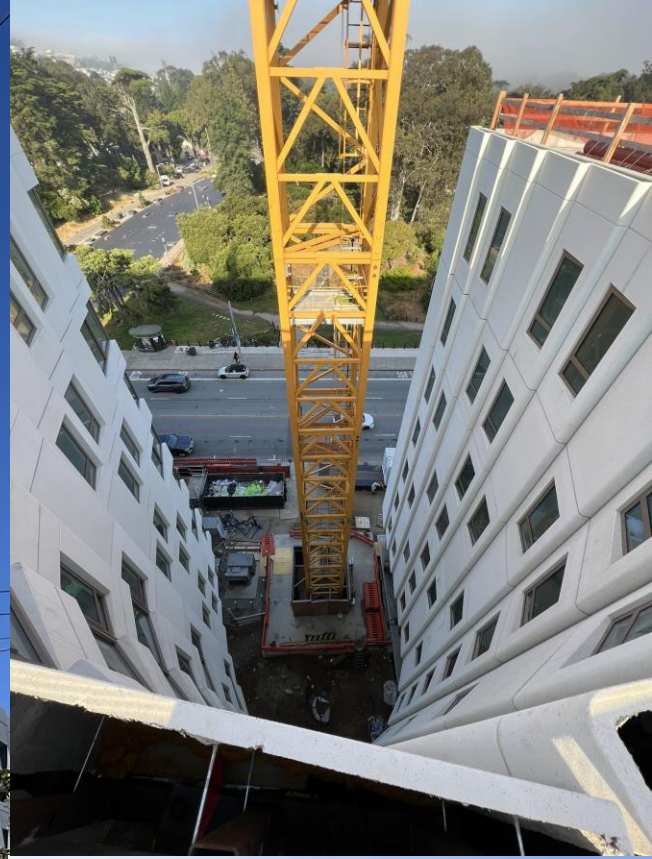
END HAIGHT

730 STANVAN
CAHILL

SPEED LIMIT 20

33
63
43





Public Art

730 STANYAN

Mural Concept-Sorell Raino-Tsui/ABG Art Group



730 STANYAN

LEAD ARTIST-
SORELL RAINO-TSUI

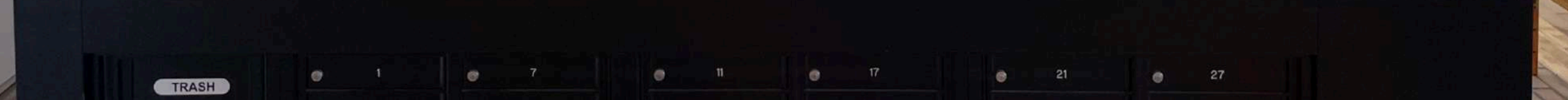
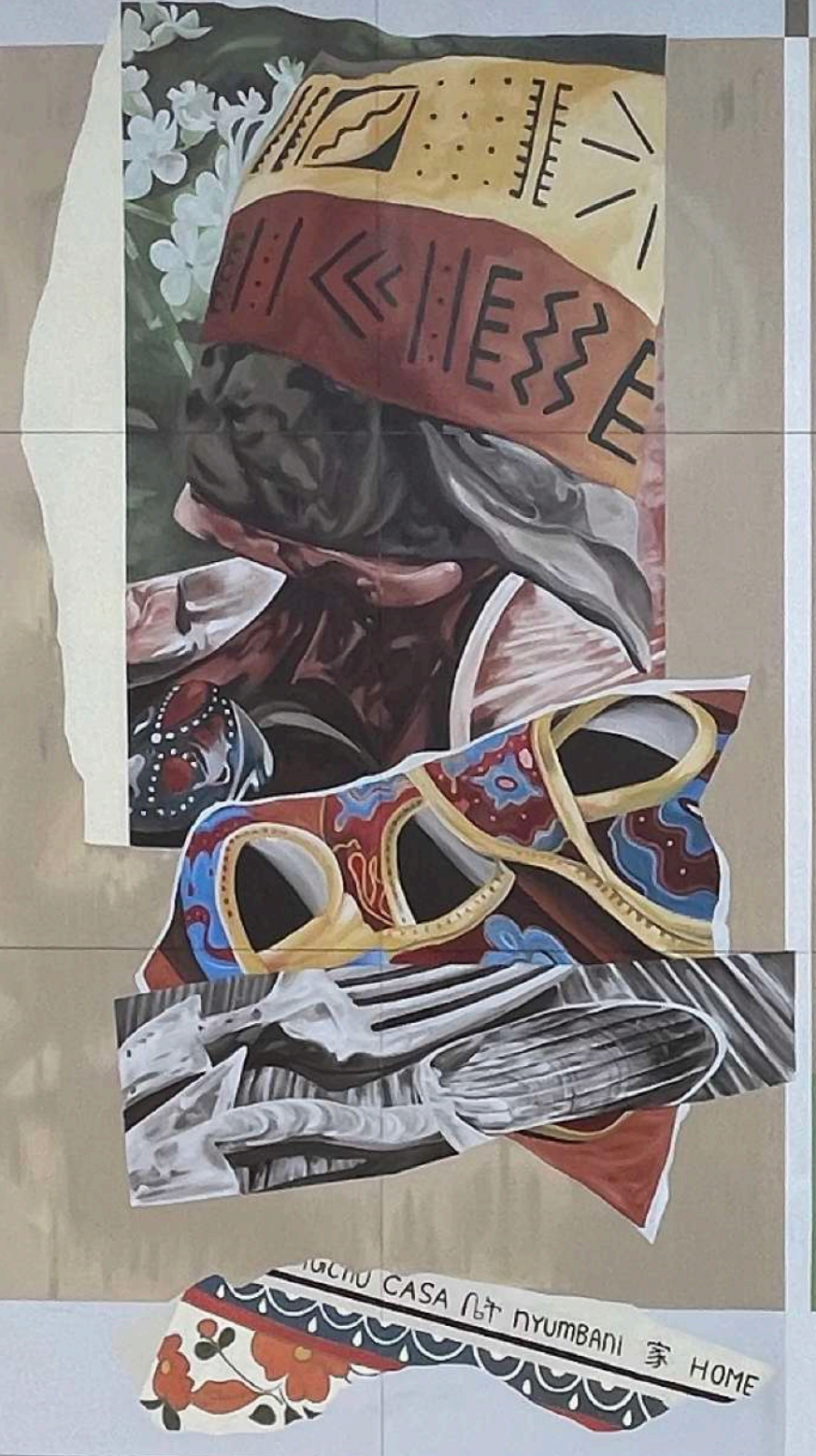
ABG ART GROUP

- Very experienced in painting large scale murals
- Fusions of cultural identity and abstraction

4200 Geary, February 2024



OLDER MURALS

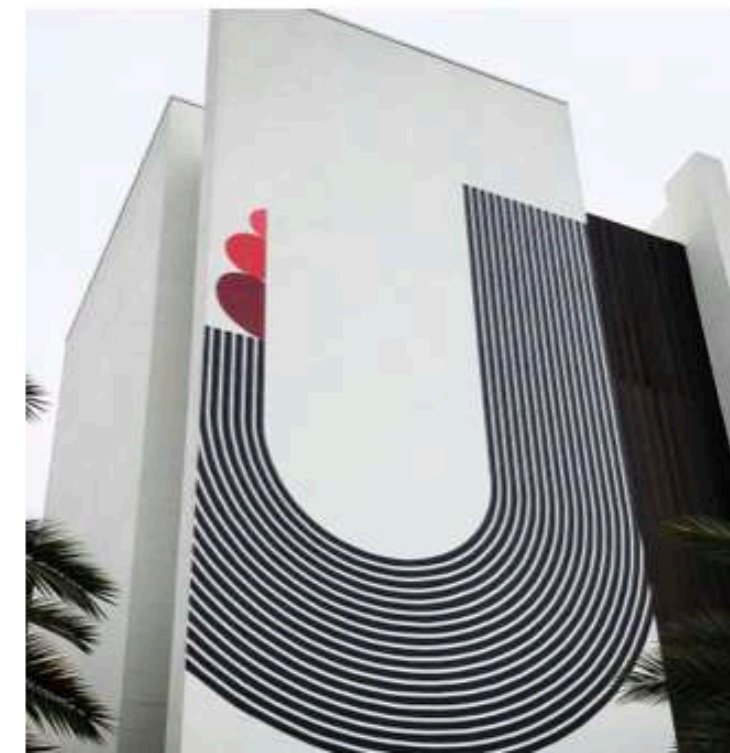
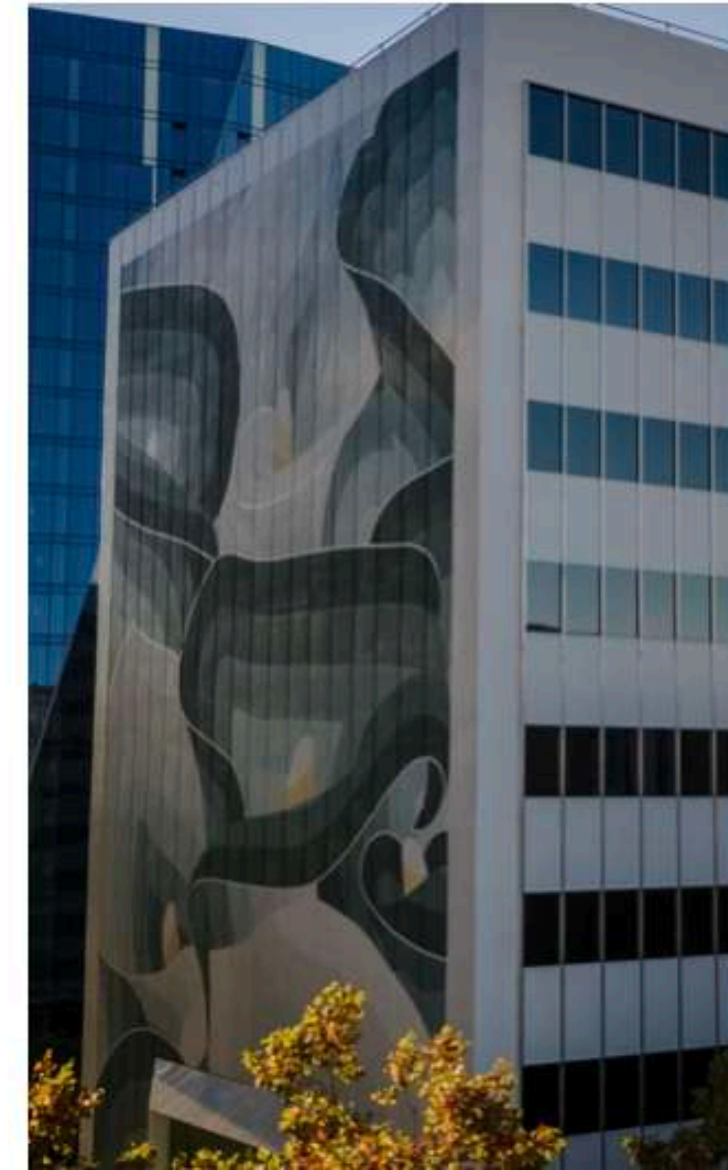
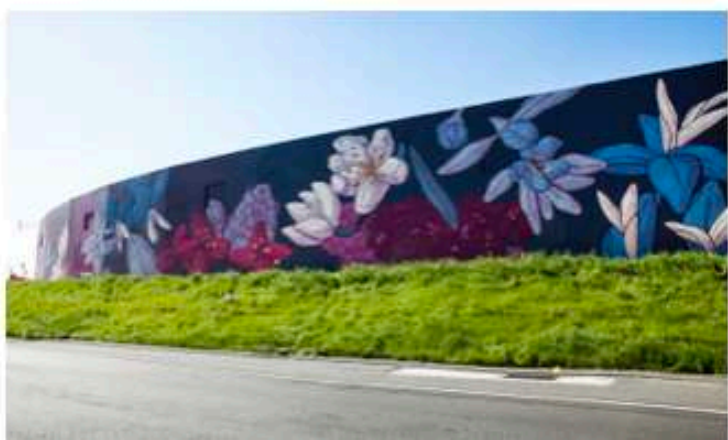
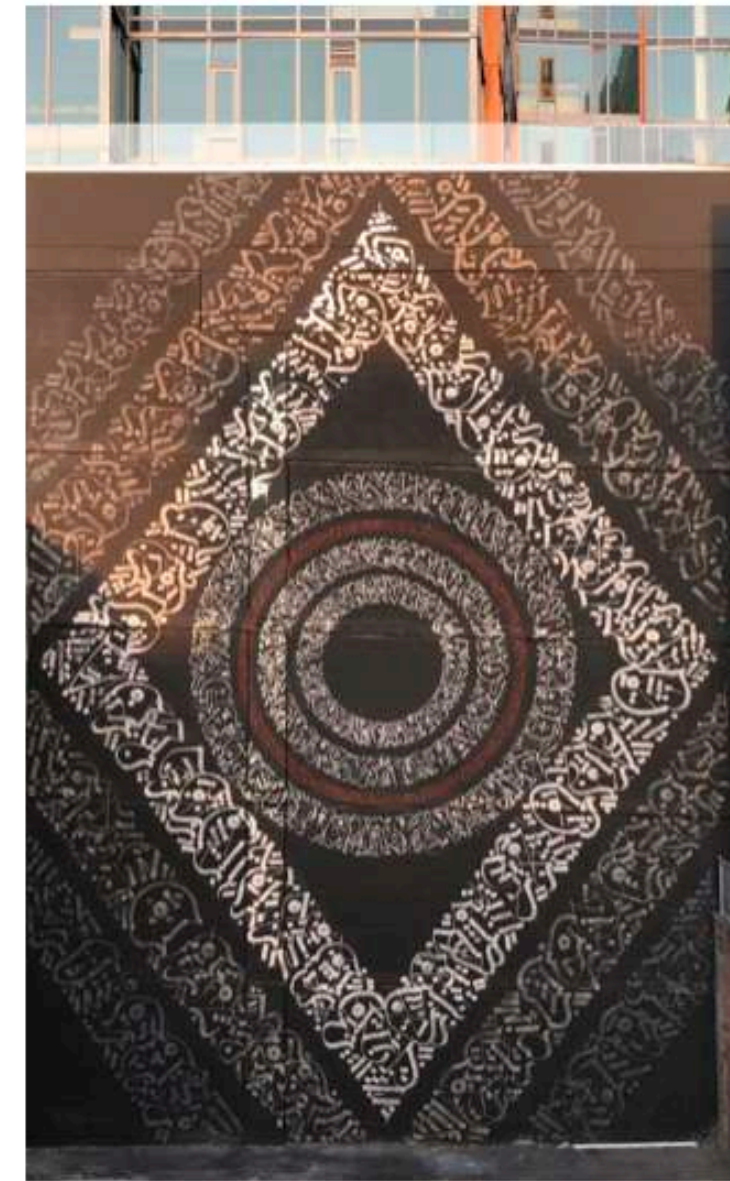
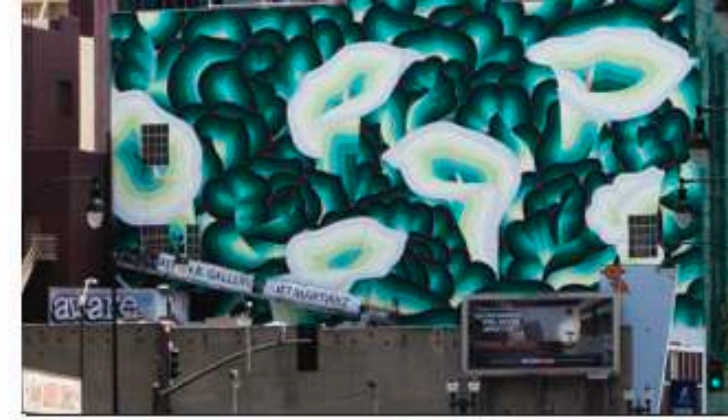




歡
海

BAY

PEARL



ABG

Murals by [Ziq Ziegler](#), [Jet Martinez](#), [Hueman](#), [ESK](#), [Sorell Raino-Tsui](#) and [Guillaume Ollivier](#)

Murals and Public Art have been at the core of ABG Art Groups identity since its inception. Our eye for curating on the public scale and the ambitious nature of our projects are evident throughout the Bay Area. Having produced over twenty murals in Oakland alone, we understand how to work with City Government, private developers and how to problem solve when executing on difficult sites. It is our goal to promote progressive contemporary art in the public sphere.



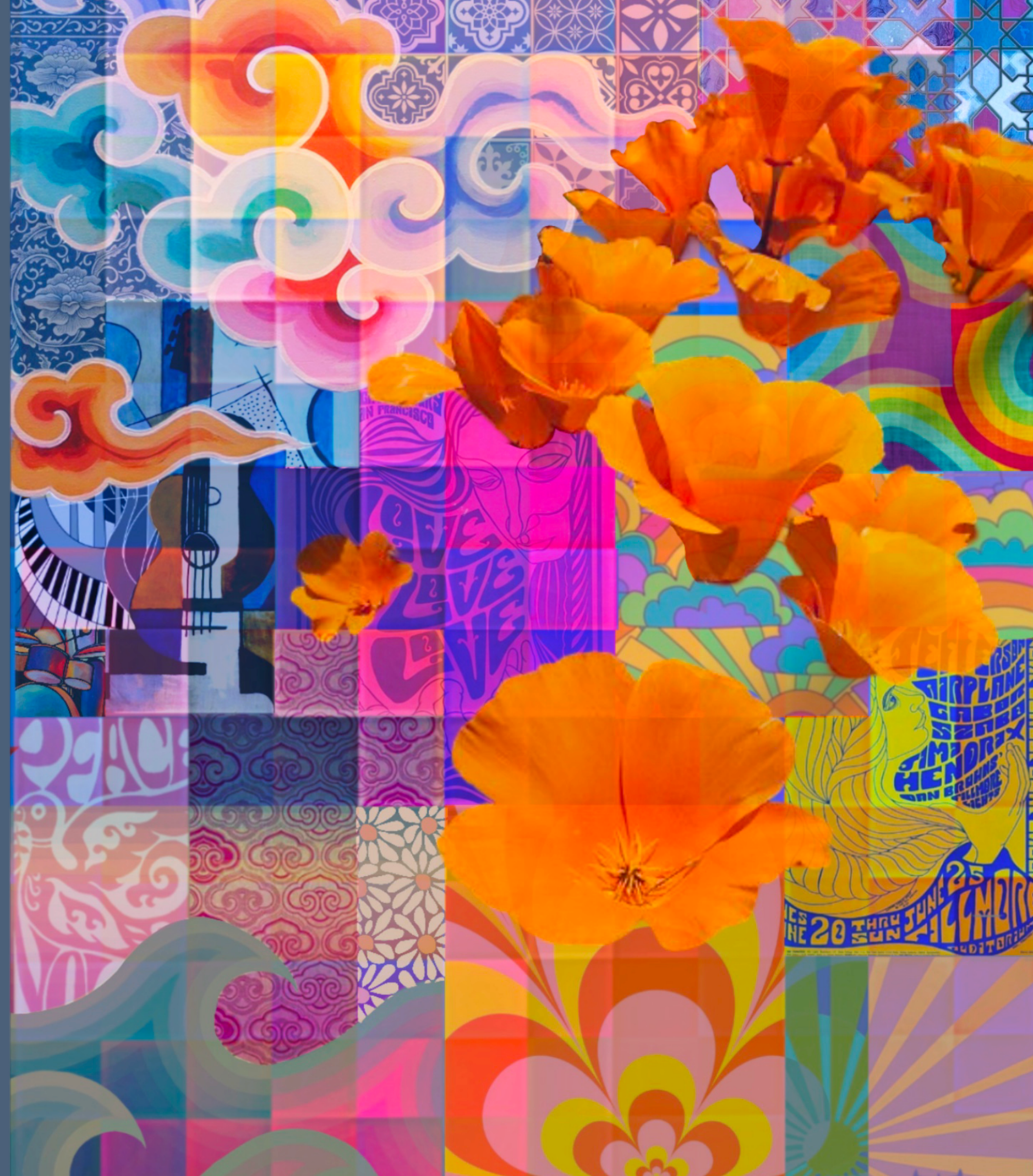
Project Goals:

To capture the essence, history, culture and color of the Haight



Layers of Symbolism

- Music Symbolism
- 60's Rock Posters & Patterns
- International Cultural Patterns
- California Poppy's/Flower Power
- Inclusivity Symbols

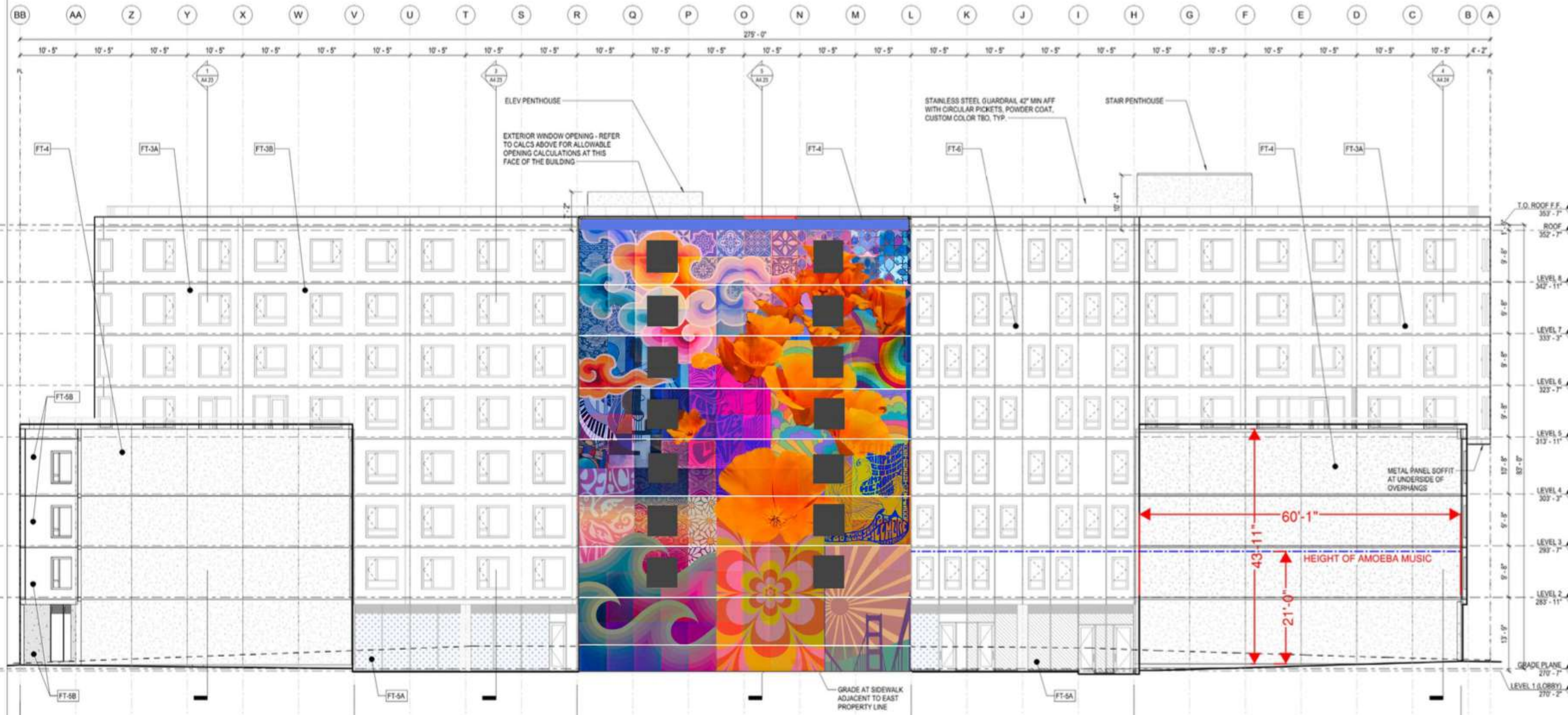


ALL GLAZING ON WEST FACING FACADES TO RECEIVE BIRD HAZARD AREA TREATMENT

GLAZING ALTERNATES

ALTERNATE 1:
VITRO SOLARBAN 70(2) CLEAR + CLEAR
BIRD HAZARD AREAS: WALKER AVIPROTEK ACID ETCH PATTERN 221 ON VITRO SOLARBAN 70(2) CLEAR + CLEAR

ALTERNATE 2:
VITRO OPTIGRAY + SOLARBAN 70(3) CLEAR
BIRD HAZARD AREAS: WALKER AVIPROTEK T UV PATTERN 717 ON VITRO OPTIGRAY + SOLARBAN 70(3) CLEAR







BOWLING

Boeba Music

OVERWOOD MOVIES & BLUE-RAYS HERE!





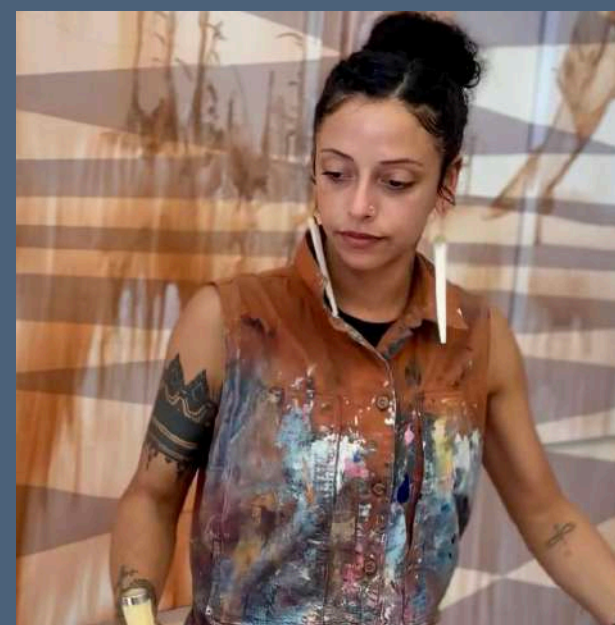
ARTIST TEAM



SORELL RAINO-TSUI

LEAD ARTIST

OUR CORE GROUP OF ARTISTS
CONSISTS OF 5 EXTREMELY TALENTED
AND EXPERIENCED MURALISTS. THIS
PROJECT WILL SUPPORT THESE
ARTISTS TO MAKE A PROFESSIONAL
LIVING WAGE IN THE BAY AREA.
ADDITIONAL ASSISTANTS WILL BE
BROUGHT ON FOR SUPPORT.



RACHAEL WOLFE

COLLABORATING
ARTIST



ELLIOT THOMPSON

COLLABORATING
ARTIST



ZOE BOSTON

COLLABORATING
ARTIST



ANDRE JONES

COLLABORATING
ARTIST

730 Stanyan
Street-level Murals

...

Jenifer K Wofford

Hello! I am:

A San Franciscan

An Educator

An Artist

A Community
Member



Call me "Woff", "Wofford", or Jenifer!

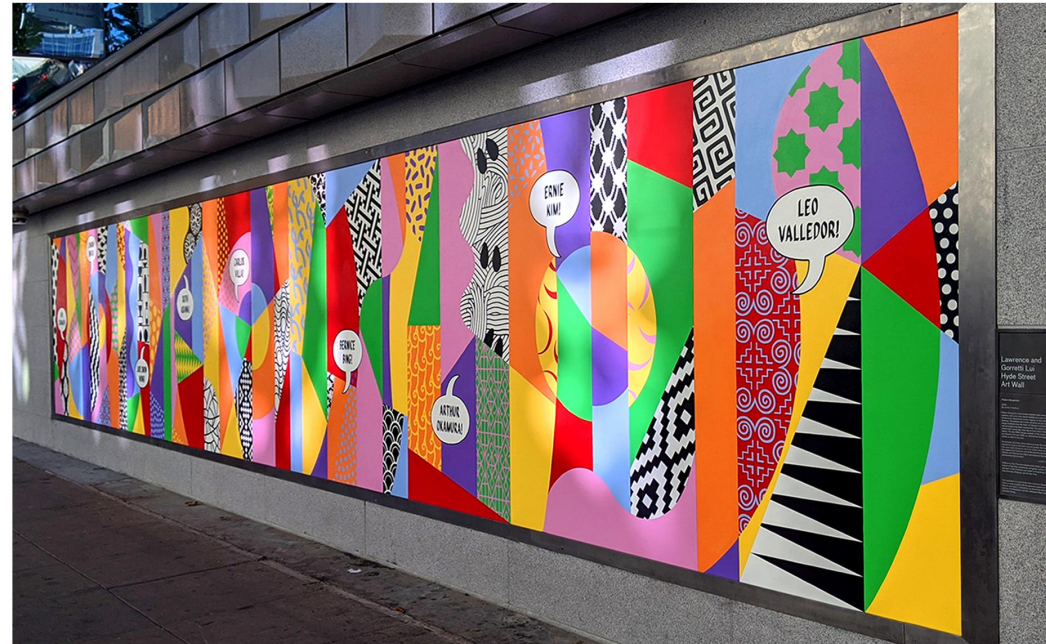
The Team so far:
Megan Badilla + Me + TBD

University of San Francisco
Art + Architecture students
will help paint!

Community days where
neighbors can help paint!



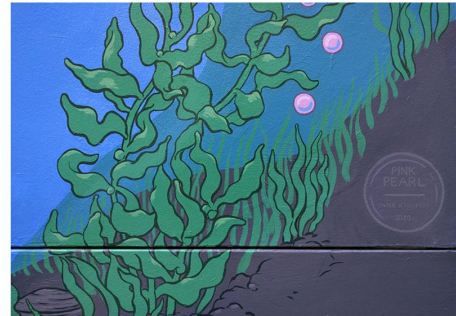
prior work:
Hyde Street Art Wall
Asian Art Museum



prior work:
Facebook SF



Prior work:
Mission District
SF



prior work: Art on Market Street SFAC



This city can be so cruel. They are tearing down the I Hotel. All my lolos, the old manongs, with nowhere to go.



I started spending more time in the Kearny Street area last year, mostly for the food. Yum! It's like Maniatown and Chinatown, all in one.



The funniest thing nearby is this pinoxy club that puts on shows. They call it a 'Punk' music. The boys are funny looking, but really nice.



I've helped out the manongs when I can, usually every couple of weeks.



At first, I was shy at the protests. I didn't want to have visa troubles.



But Totoy's activism in Manila runs in the family, I guess.

FLOR 1977 Redevelopment

Six years in the life of Flor Villanueva, Manila to San Francisco

Artist: Jennifer K Wofford 2008

Illustrations by Steve Meador, Dan Gonzalez, Catherine Curtis Chen, Lori Wofford, Liu Tamending, Michael Hill and Eddie Palomo. 1977 archival photo reference courtesy of the Manilatown Heritage Foundation/Chris Fujimoto Collection. A project of the San Francisco Arts Commission's Art on Market Street Program, funded by the San Francisco Arts Commission and the San Francisco Municipal Transportation Agency. www.sfartscommission.org/pubart/



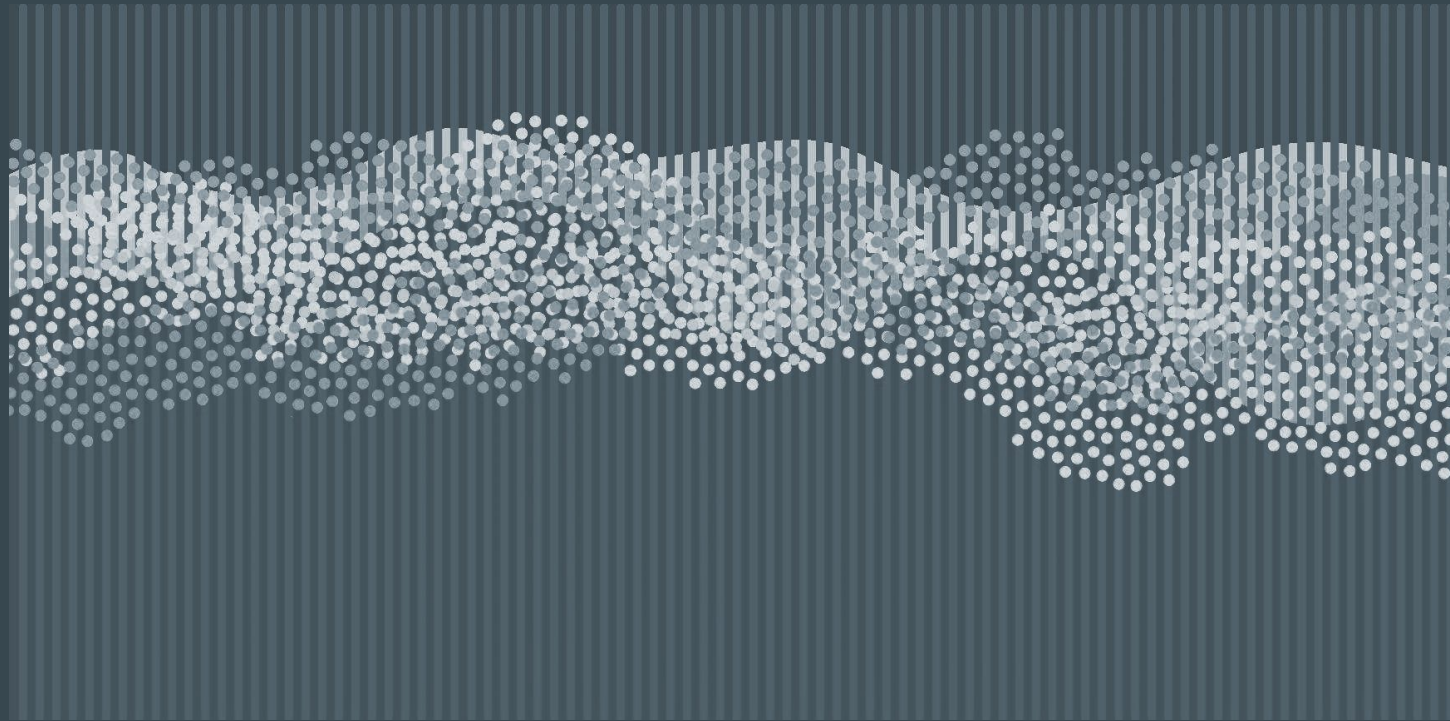
excerpts, Art on Market Street, SFAC



“My dad used to tell me I was born with fog in my veins.”

-AV, SF native

VEIL



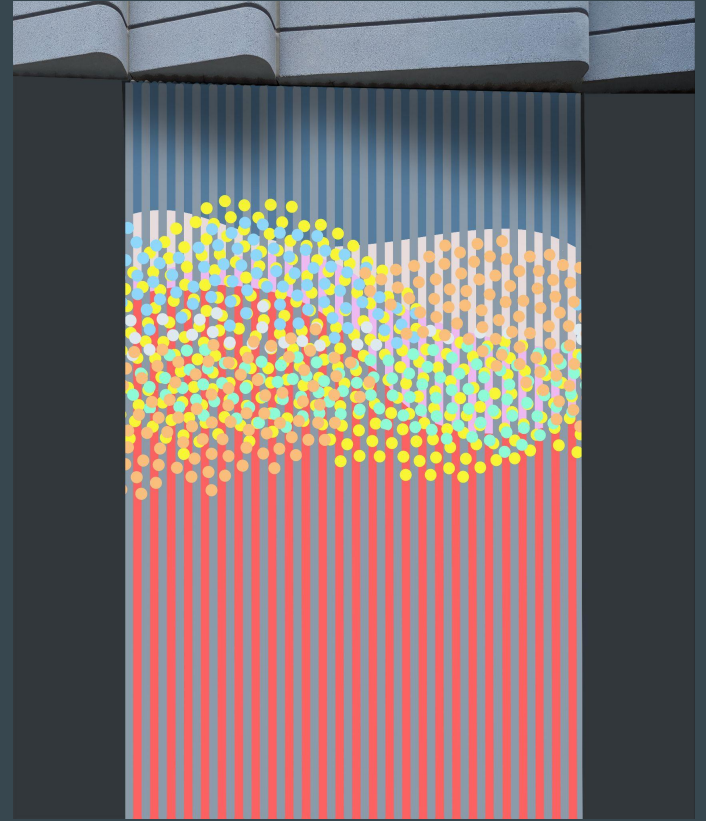
VEIL Inspirations:

- a scrim between worlds
- the threshold of
 - the Haight and the Park
 - culture and nature
- subtle psychedelia through optical illusion
- mystery and softness
- Positive, relaxed energy



VEIL Considerations :

- architecture and place
- rippled panel surface
- Gentle, curving forms like fog/mist
- Colors that are both calm and vibrant
- Varied colors but also design unity
- Lenticular design for cool optical effect
- Friendly design for both participation and maintenance

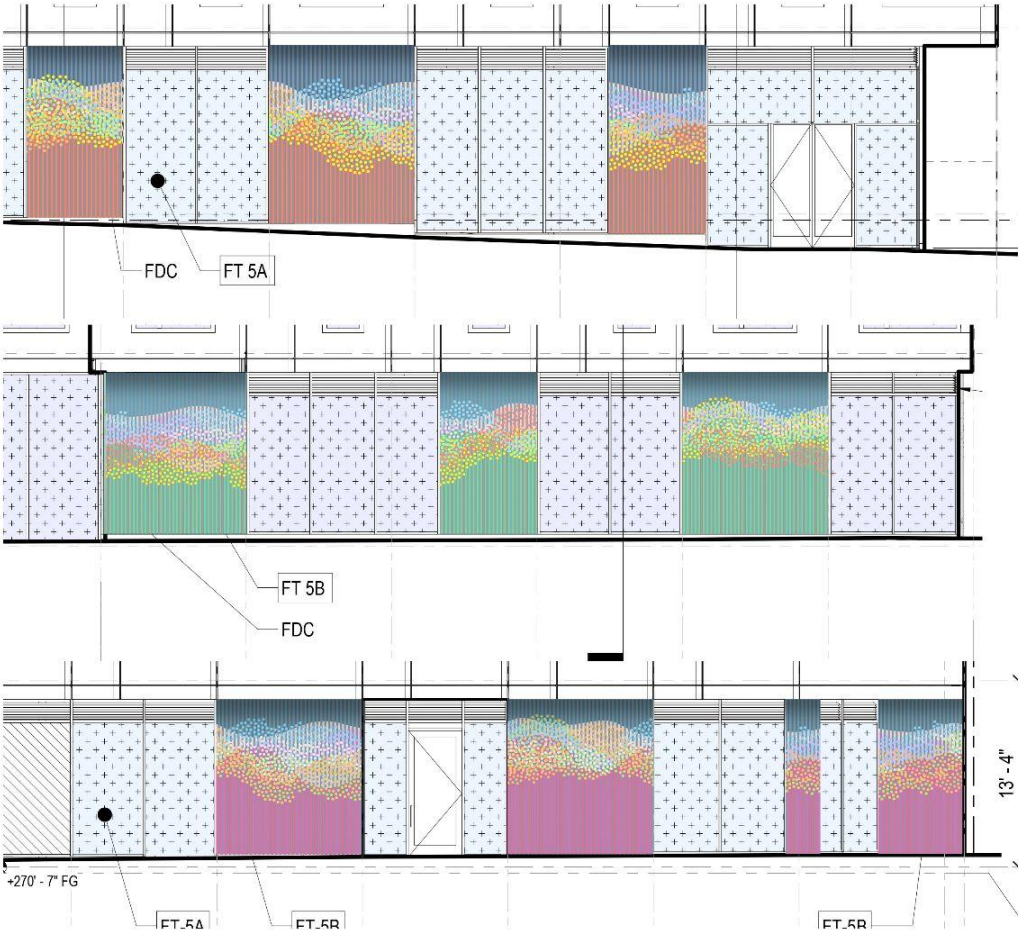




HAIGHT

STANYAN

WALLER





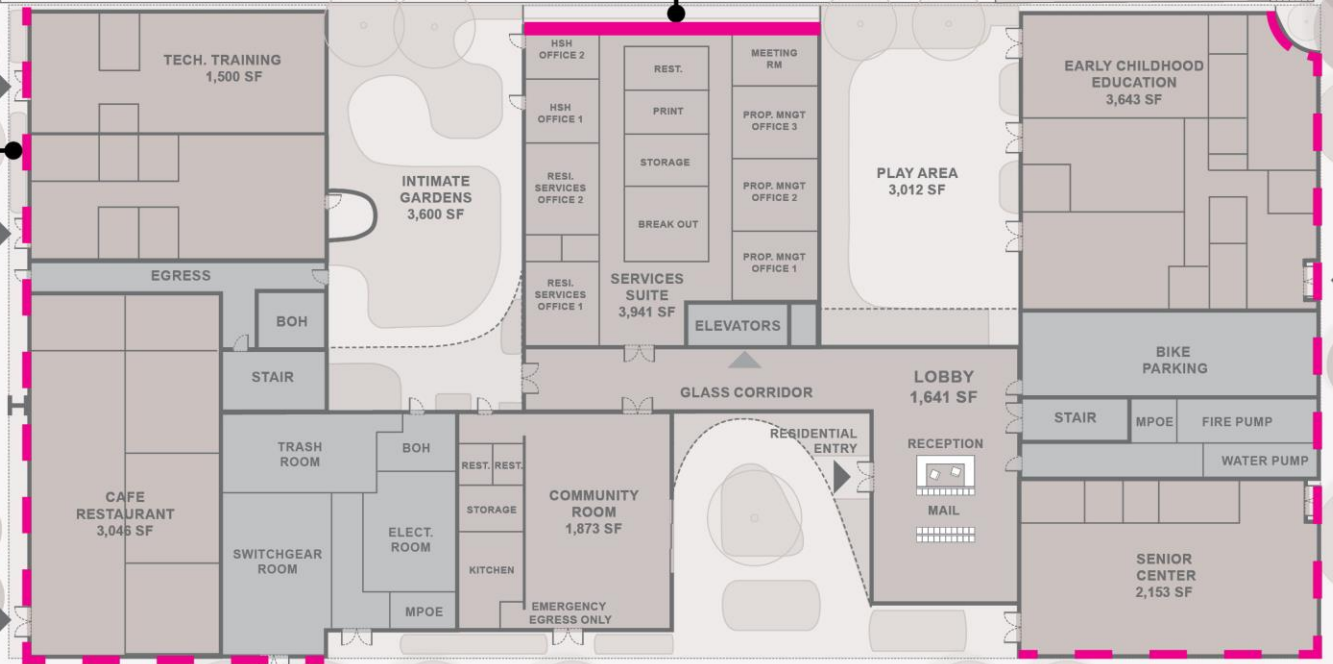
< show video clip :) >

Jenifer K Wofford
wafflehouse.com
IG: @woffsilog

**LOCATION 1: EAST PROPERTY WALL.
ARTIST SORELL TSUI, ABG ART GROUP**



**LOCATION 2: STREET STOREFRONT.
ARTIST JENIFER WOFFORD**



HAIGHT ST.

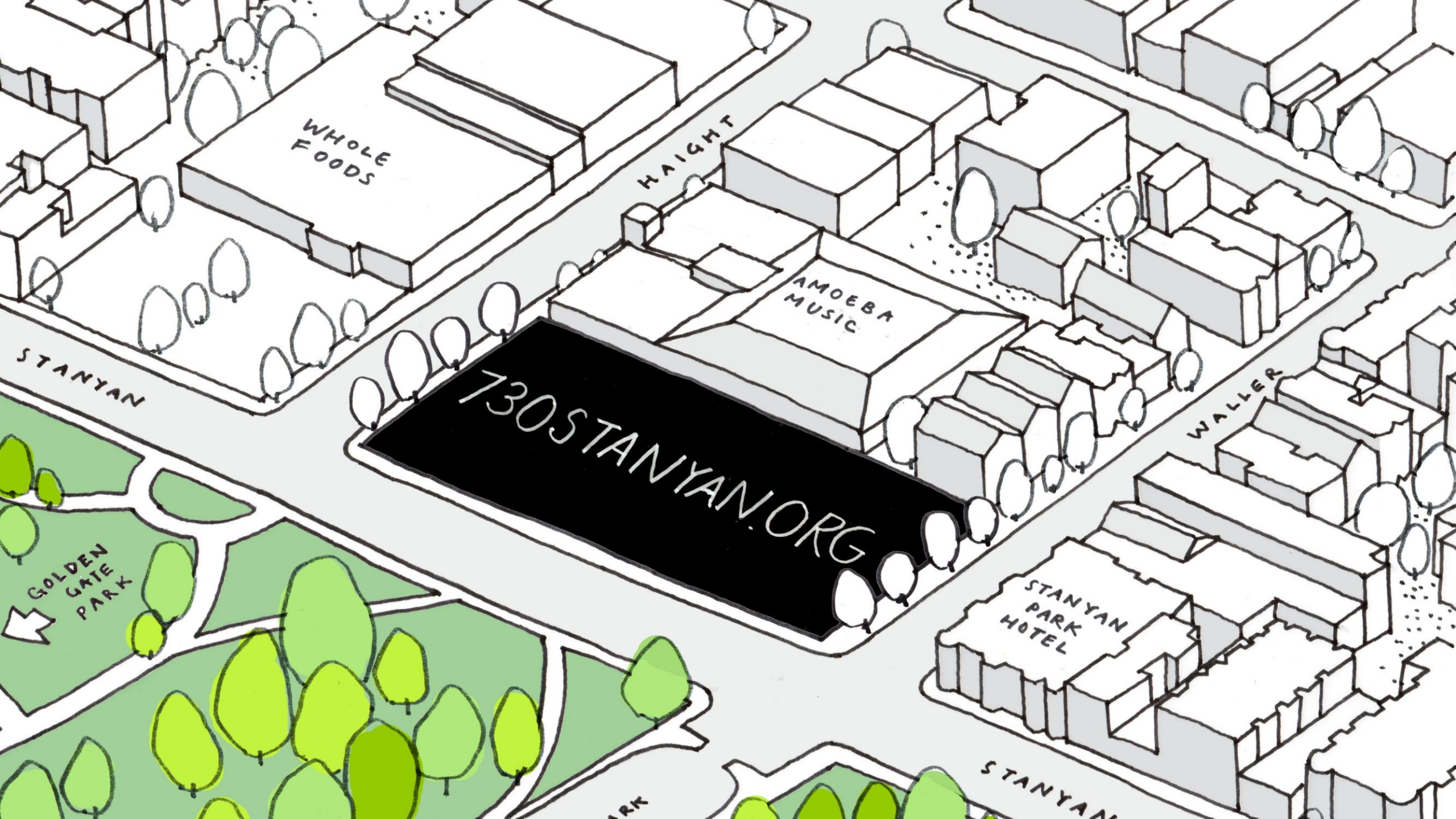
WALLER ST.

STANYAN ST.

DROP-OFF / LOADING ZONE



BUS



WHOLE
FOODS

HAIGHT

AMOEBIA
MUSIC

730 STANYAN.ORG

WALLER

STANYAN
PARK
HOTEL

GOLDEN
GATE
PARK

STANYAN

STANYAN

PARK